

# EDITION CHROMO | HOTEL 02

Sunny Day



**ANKER**  
TEPPICHBODEN

# SUNNY DAY

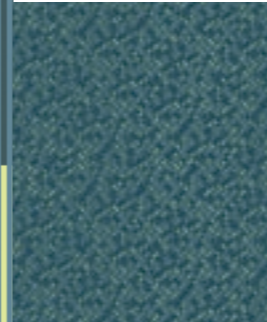


Farbkonzept: JOI-Design

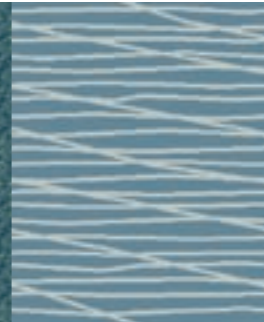


# SUNNY DAY VARIATION 01

M6028\_02



M5065\_06



M6027\_03



M5460\_06



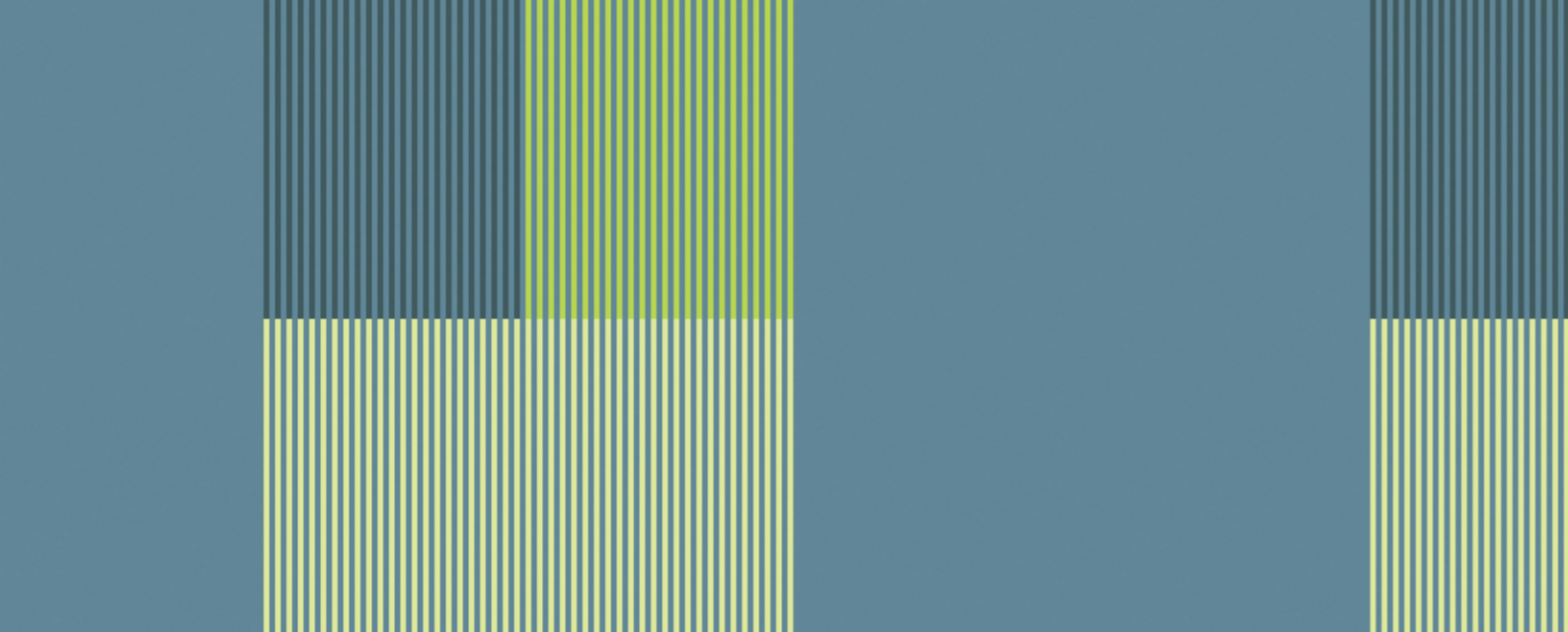
M6026\_01



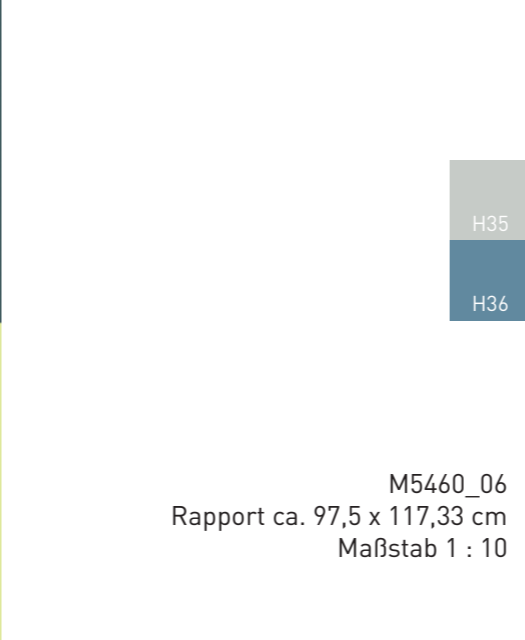
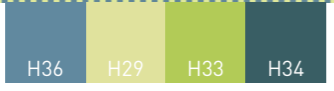
M6029\_01



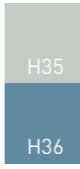




M6029\_01  
Rapport ca. 97,5 x 61,33 cm  
Maßstab 1 : 10



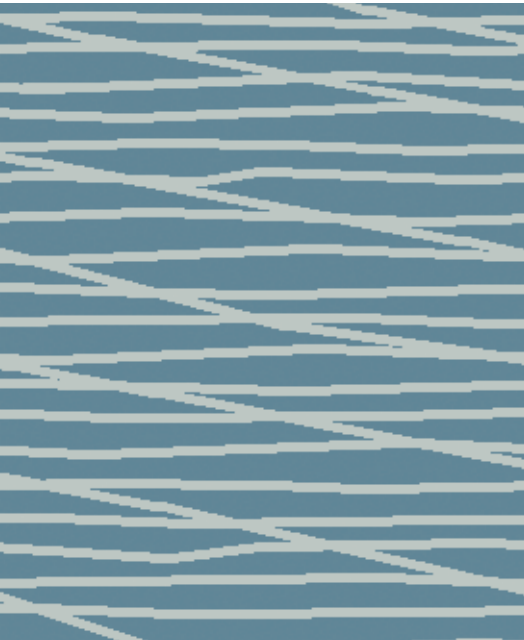
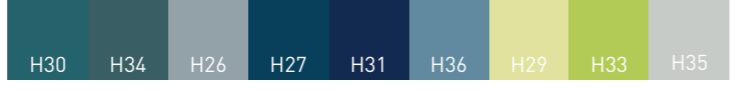
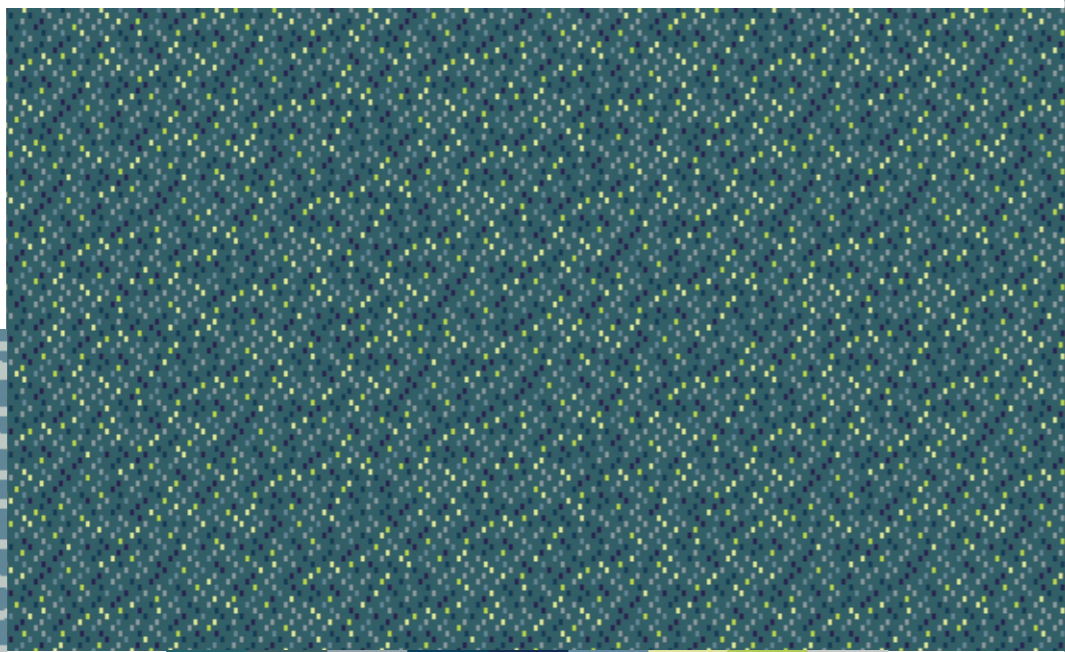
M5460\_06  
Rapport ca. 97,5 x 117,33 cm  
Maßstab 1 : 10



M6026\_01  
Rapport ca. 21,66 x 81,33 cm  
Maßstab 1 : 4



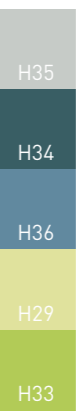
M6028\_02  
Rapport ca. 65 x 32 cm  
Maßstab 1 : 10



M5065\_06  
Rapport ca. 97,5 x 61,33 cm  
Maßstab 1 : 10

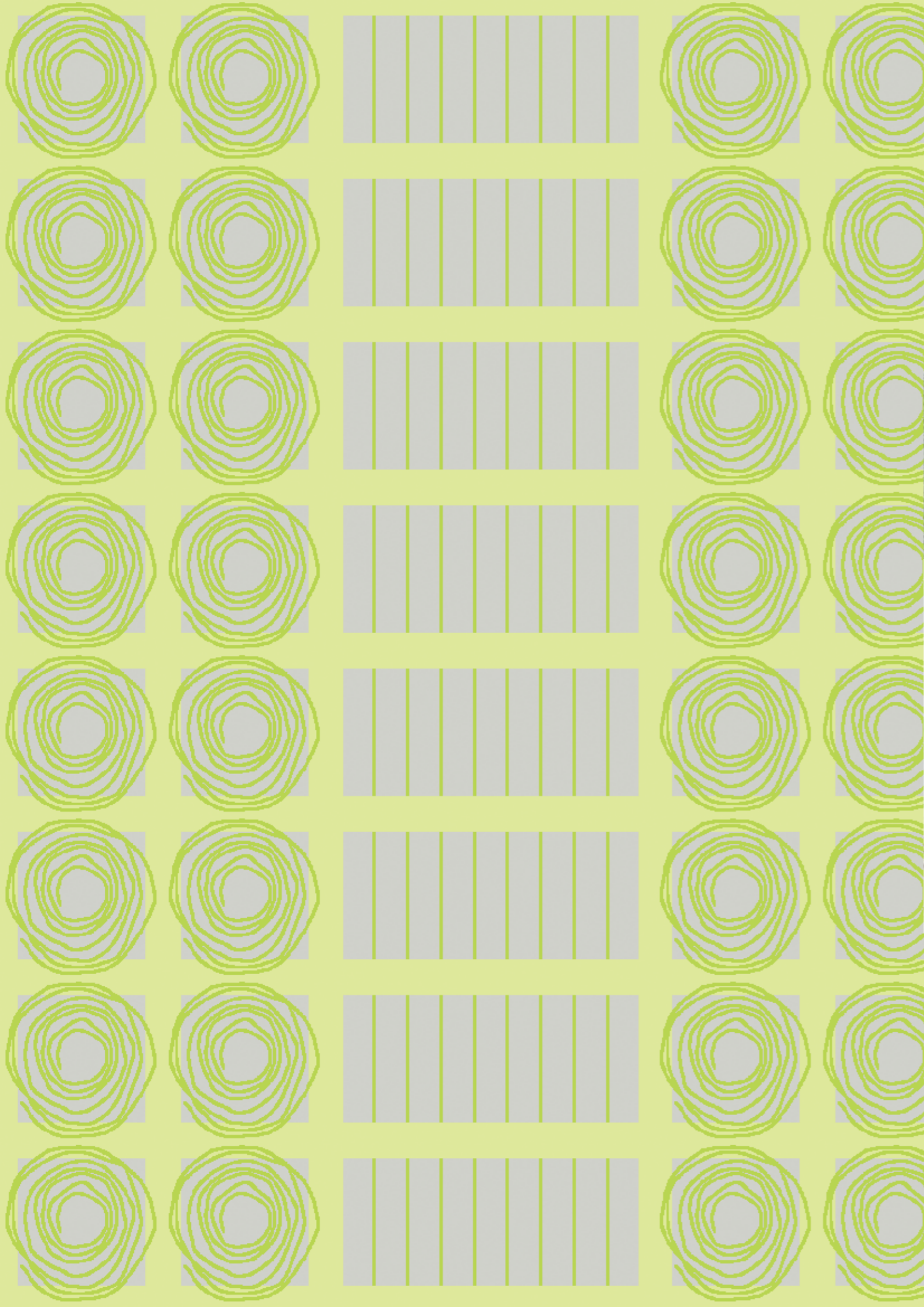


M6027\_03  
Rapport ca. 65 x 65 cm  
Maßstab 1 : 10

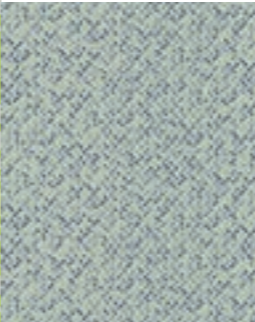




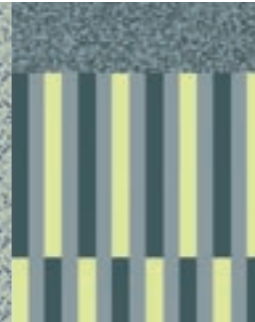
# SUNNY DAY VARIATION 02



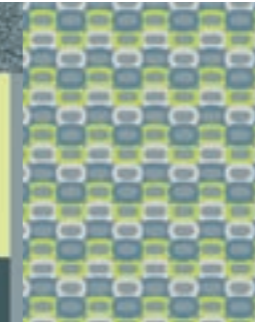
M6028\_01



M6043\_01



M6031\_01



M6027\_01



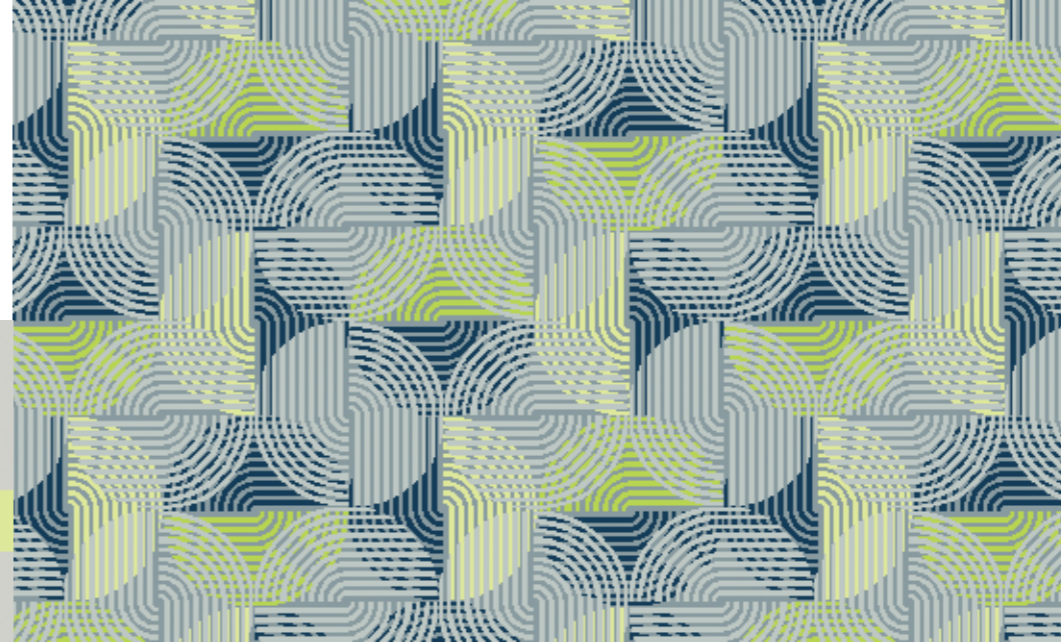
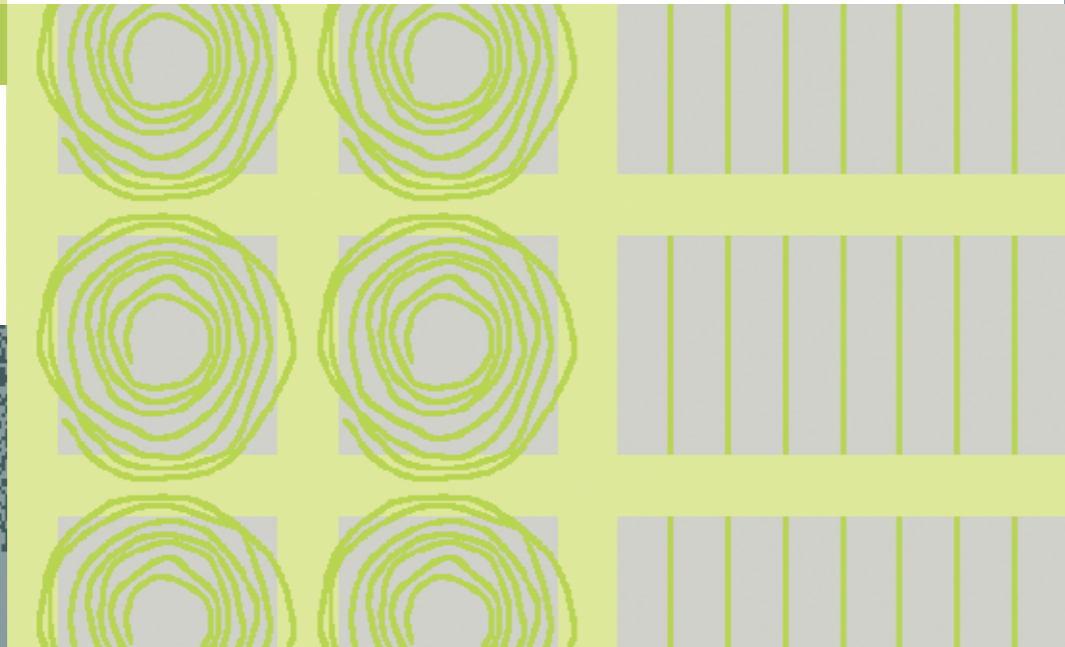
M6033\_01





M6033\_01  
Rapport ca. 97,5 x 97,33 cm  
Maßstab 1 : 10

- H28
- H29
- H33



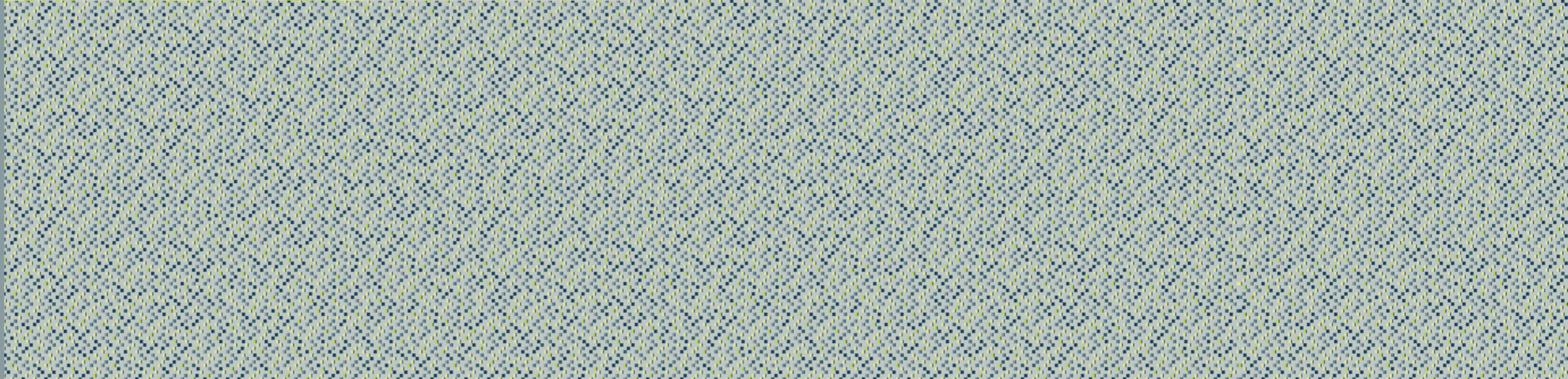
- H35
- H26
- H27
- H29
- H33

M6027\_01  
Rapport ca. 65 x 65 cm  
Maßstab 1 : 10



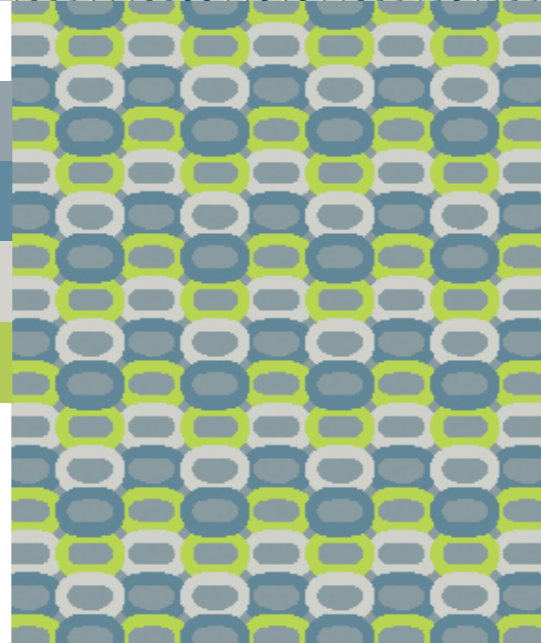
M6043\_01  
Rapport ca. 65 x 178,66 cm  
Maßstab 1 : 10

- H26
- H34
- H29



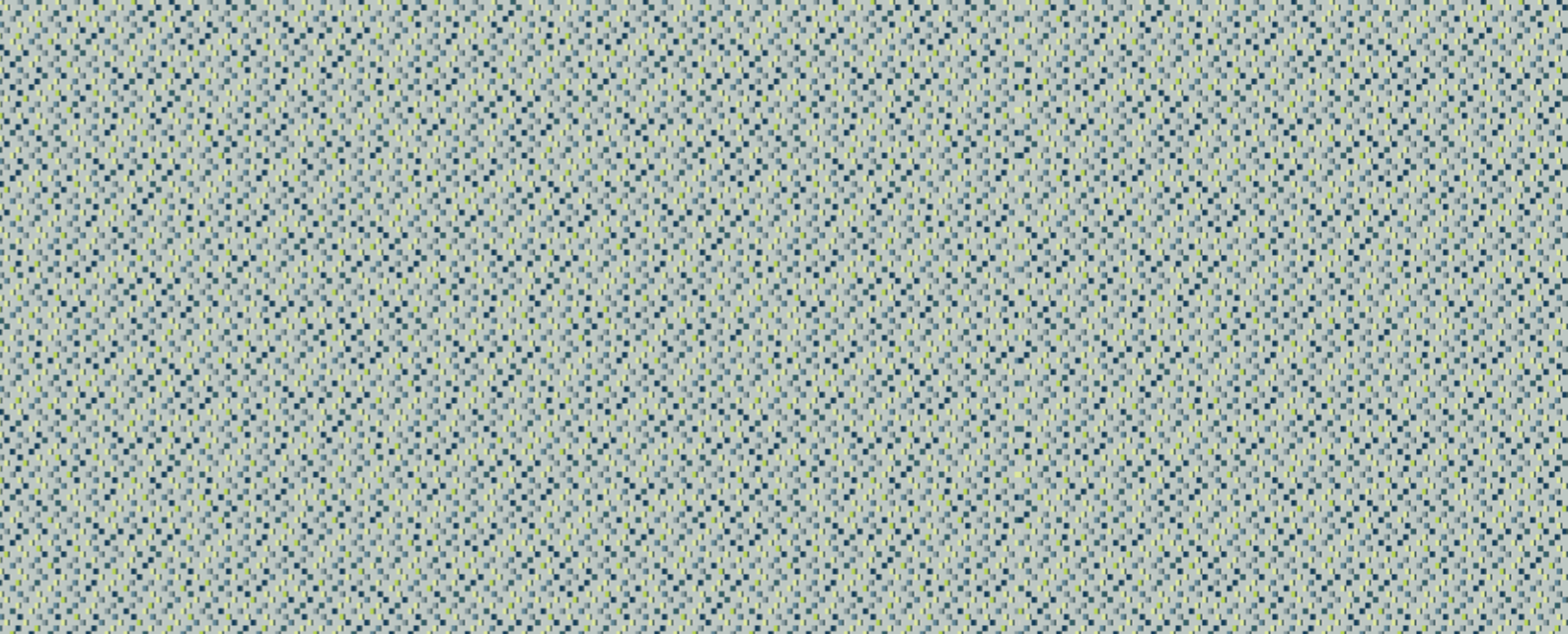
M6031\_01  
Rapport ca. 43,33 x 44 cm  
Maßstab 1 : 10

- H26
- H36
- H28
- H33



- H35
- H34
- H28
- H29
- H26
- H27
- H36
- H30
- H33

M6028\_01  
Rapport ca. 65 x 32 cm  
Maßstab 1 : 10

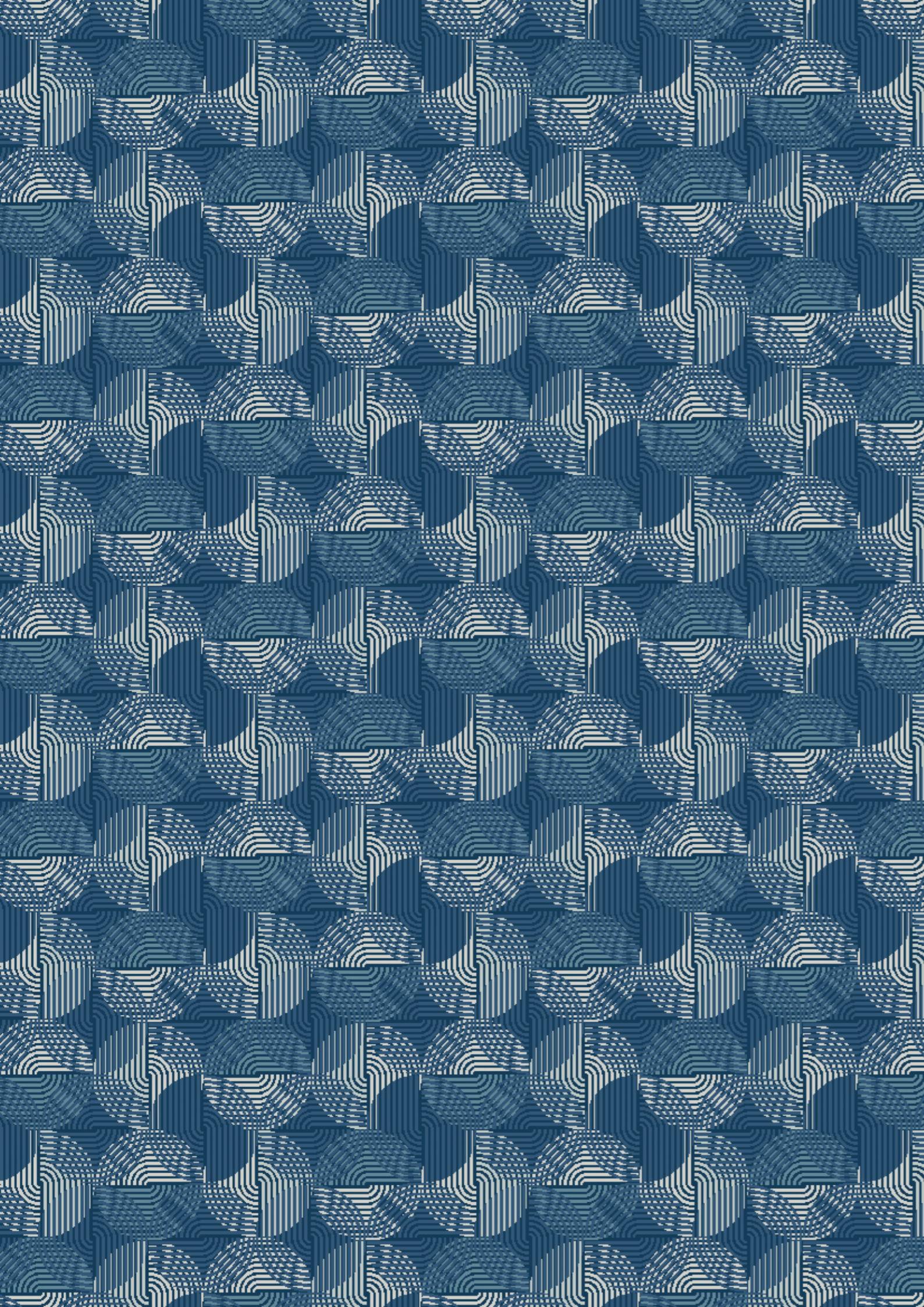








# SUNNY DAY VARIATION 03

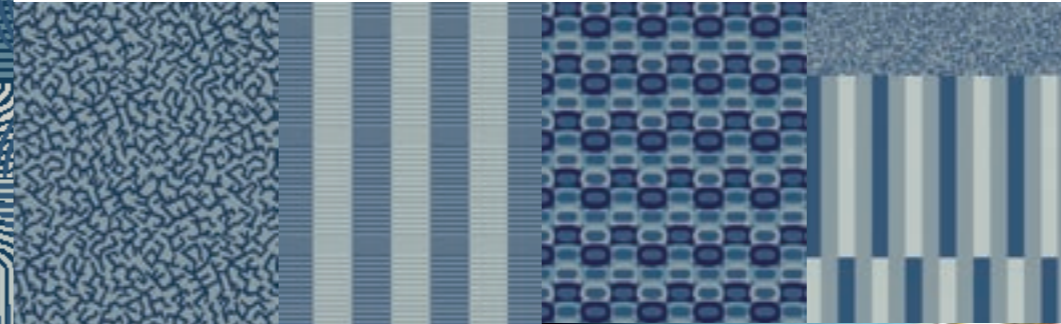


M6032\_01

M6030\_01

M6031\_02

M6043\_03



M6027\_02



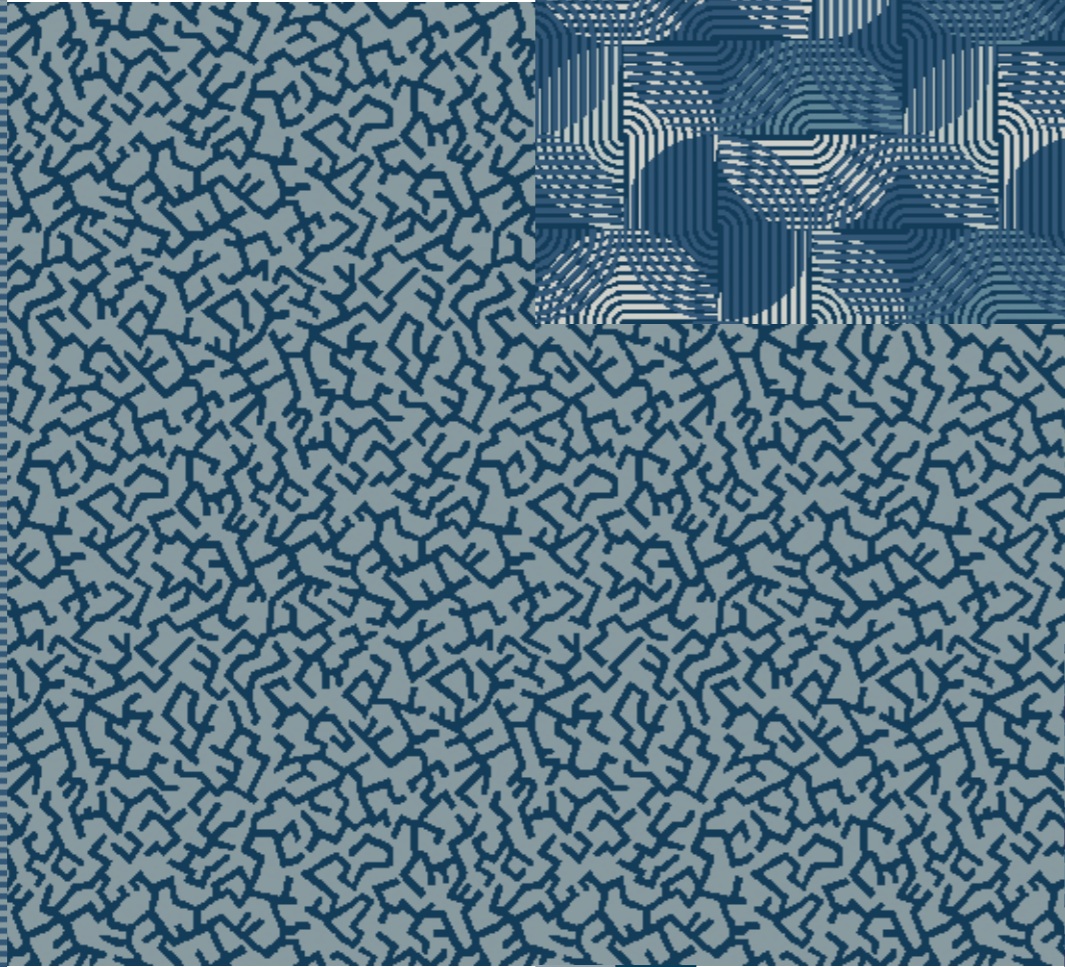
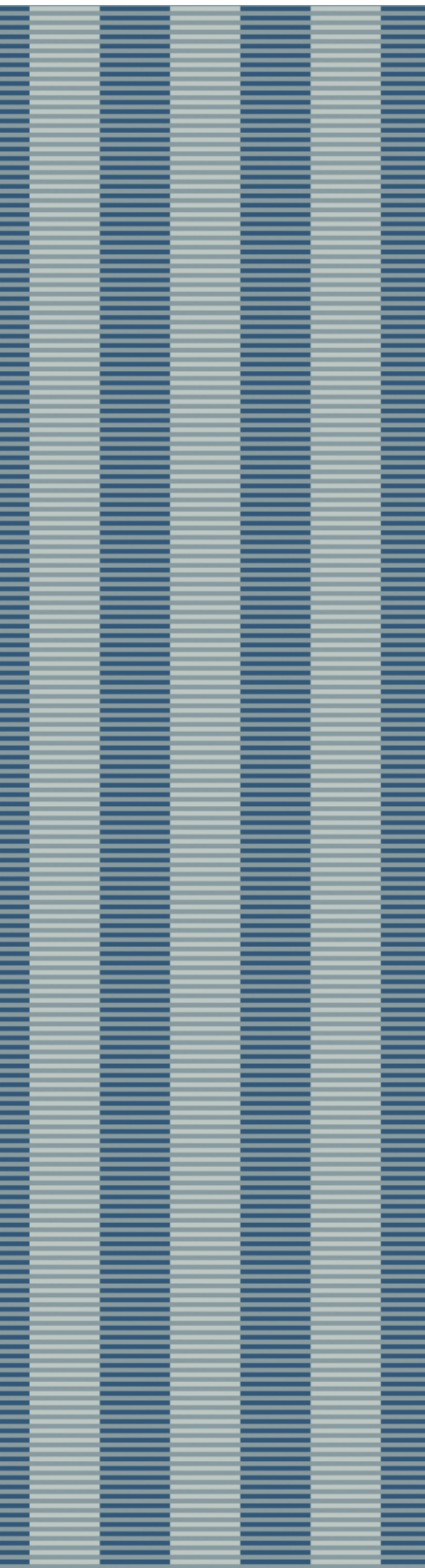
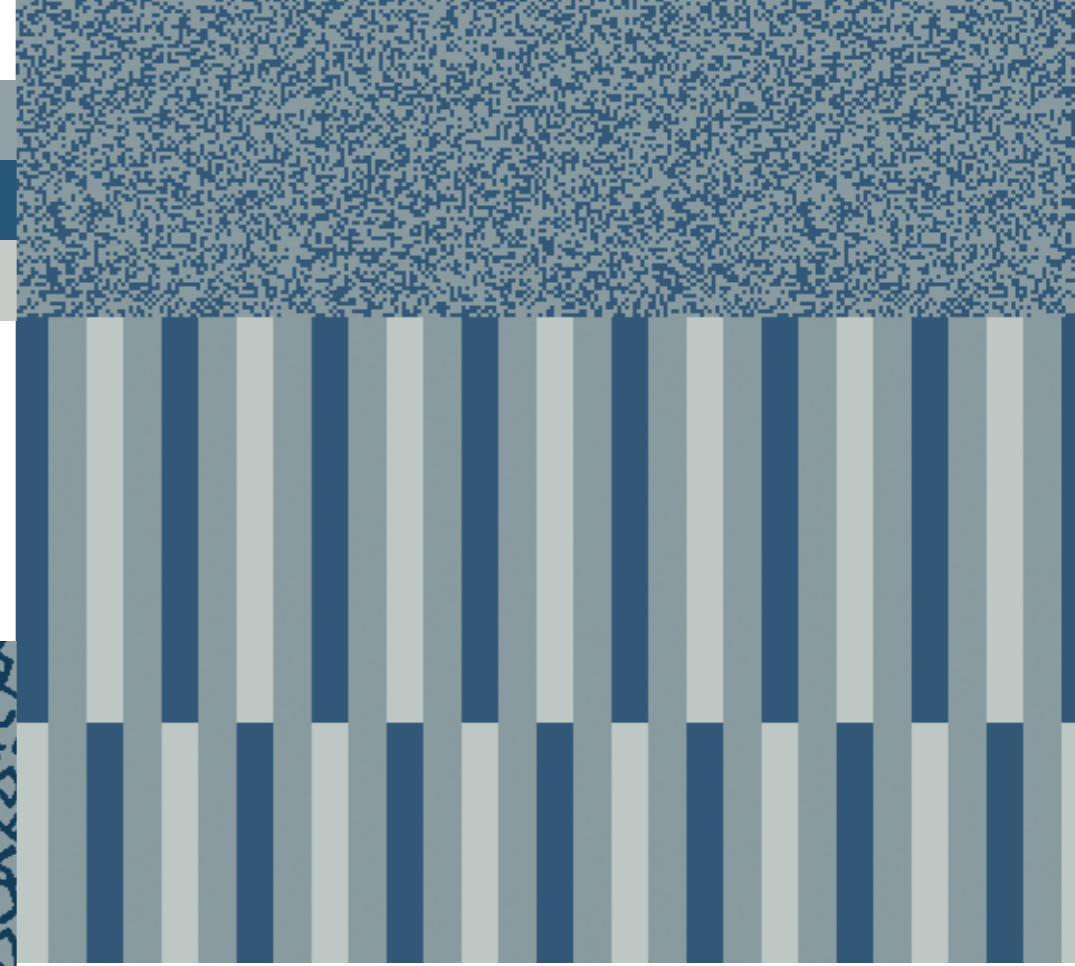
H32 H27 H28 H35 H36

M6027\_02  
Rapport ca. 65 x 65 cm  
Maßstab 1 : 10



H26  
H32  
H35

M6043\_02  
Rapport ca. 65 x 178,66 cm  
Maßstab 1 : 10



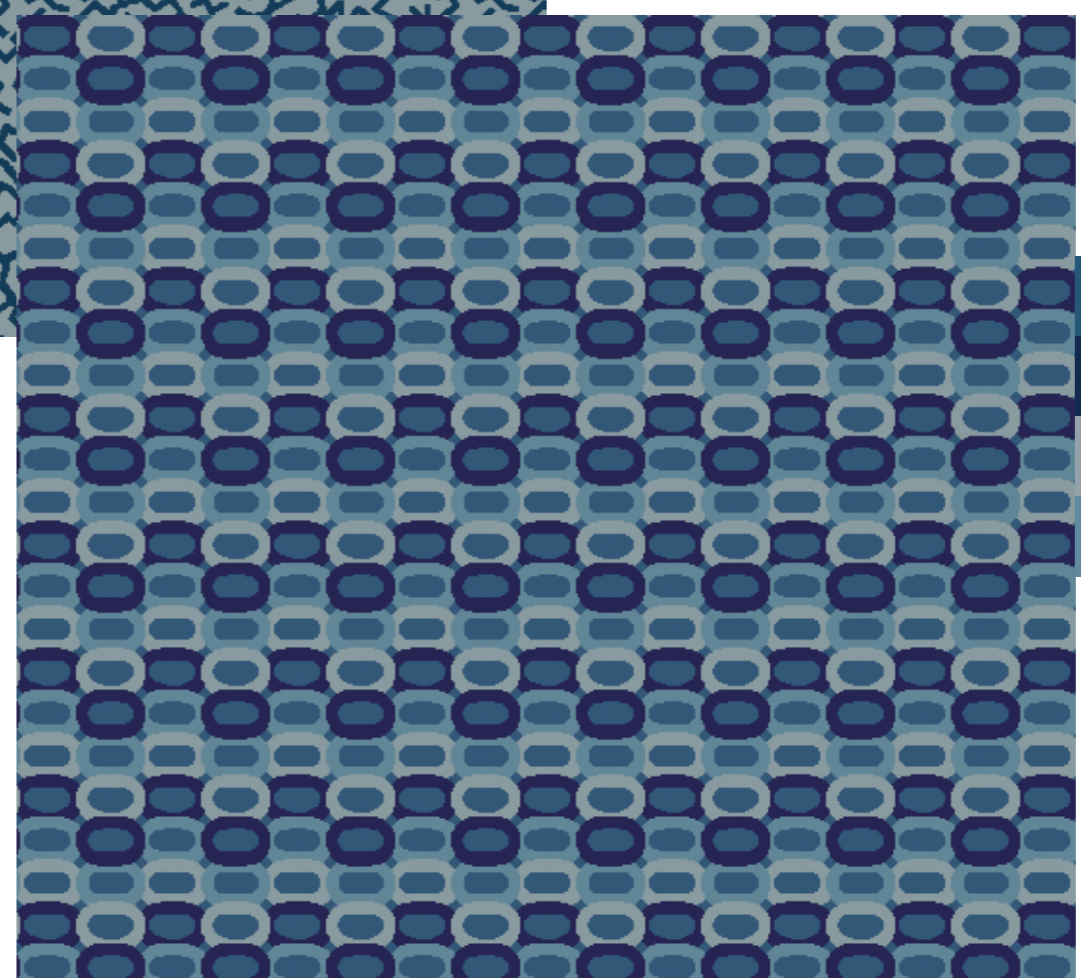
M6032\_01  
Rapport ca. 39 x 64 cm  
Maßstab 1 : 10

H26 H27

H26  
H32  
H35

M6030\_01  
Rapport ca. 15 x 1 cm  
Maßstab 1 : 10

H32  
H31  
H26  
H36



M6031\_02  
Rapport ca. 43,33 x 44 cm  
Maßstab 1 : 10





### NEUE IMPULSE FÜR ÄSTHETISCHE BODENBELAGS-LÖSUNGEN IN HOTELS

Hier finden Sie farblich und gestalterisch aufeinander abgestimmte Teppichboden-Vorschläge in Themengruppen zusammengefasst. Mit den verschiedenen Dessins jeder dieser Gruppen können Sie alle Funktionsbereiche in Ihrem Haus stilvoll ausgestalten: Empfang, Lobby, Restaurant, Zimmer, Flure, Congress usw. Dabei haben Sie die Sicherheit, dass am Ende die einzelnen Komponenten zu einem geschmackvollen Ganzen arrangiert sind.

### NEW IMPULSES FOR AESTHETIC FLOORCOVERING SOLUTIONS IN HOTELS

Here you will find carpet proposals presented by themes matching in designs and colours. With the different designs of each theme you can furnish all areas in your house with style: Reception, lobby, restaurant, guest rooms, corridors, meeting rooms etc. You can always be certain, that the individual components will match into an elegant combination.

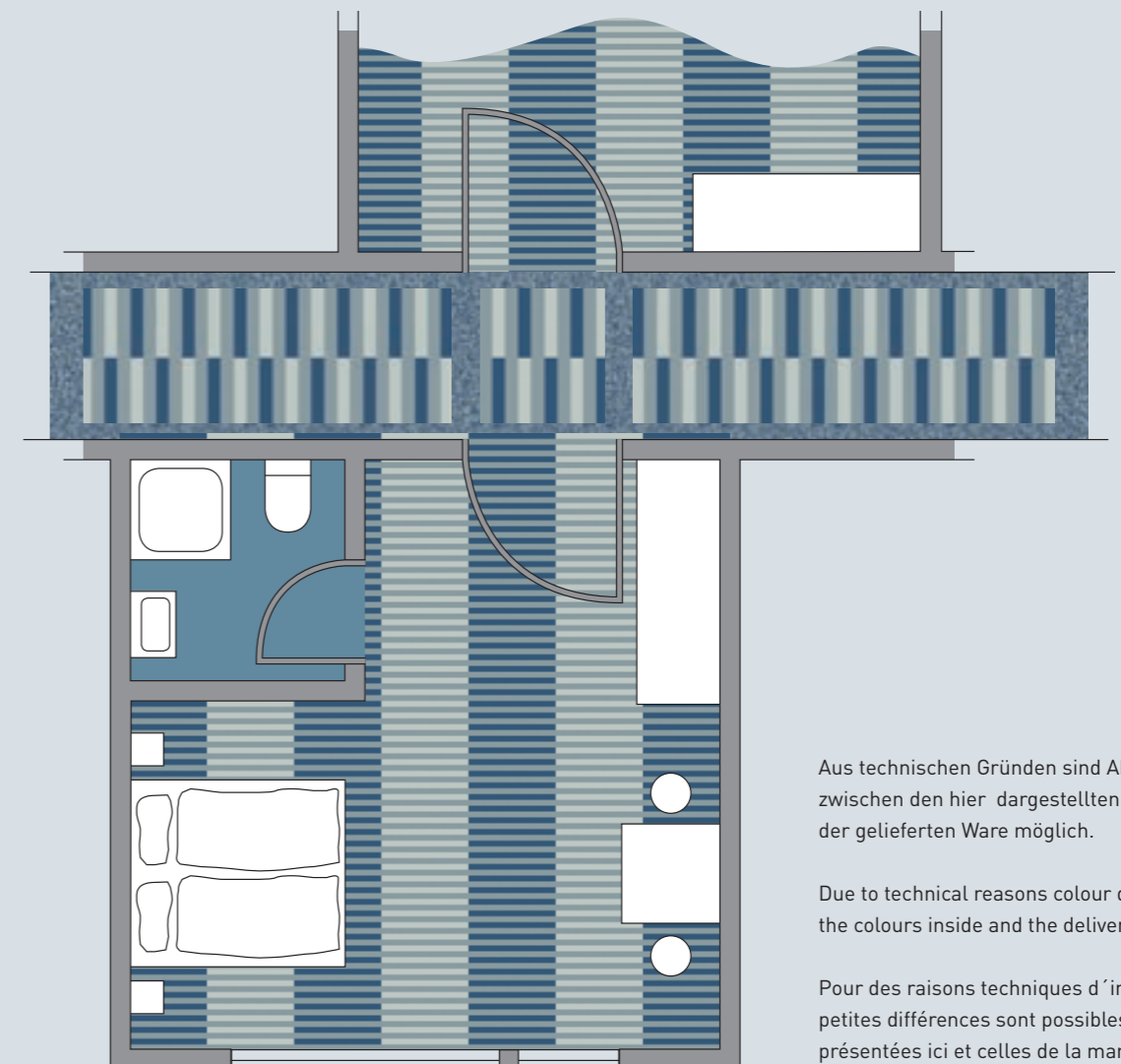
### DES SOLUTIONS ESTHÉTIQUES ET NOVATRICES EN MATIÈRE DE RECOUVREMENT DE SOL TEXTILE DANS LES HÔTELS

Vous trouverez ici, rassemblées par thèmes, des propositions de recouvrement de sol textile dont les couleurs et les motifs s'accordent. Les différents dessins présentés dans chacun des groupes vous permettront de décorer votre établissement, quelle que soit la fonctionnalité de l'espace concerné: réception, lobby, restaurant, chambre, couloir, salle de conférence, etc. Au final, Anker vous garantit que les différentes composantes formeront un tout arrangé avec goût.

Die Originalfarben zu dieser Edition stellen wir Ihnen in unserer Farbbox **Edition 01** zur Verfügung. Rufen Sie uns an: 02421/804-253

The original colours to this edition will be available in our colourbox **Edition 01**. Phone: +49 (0)2421/804-216

Les couleurs originales visant cette édition nous mettons vous dans notre boîte de couleurs **Edition 01** à la disposition. Vous appel nous: le +49 (0)2421/804-216



Aus technischen Gründen sind Abweichungen zwischen den hier dargestellten Farben und der gelieferten Ware möglich.

Due to technical reasons colour deviation between the colours inside and the delivery are possible.

Pour des raisons techniques d'impression, de petites différences sont possibles entre les couleurs présentées ici et celles de la marchandise délivrée.





**ANKER**  
TEPPICHBODEN

**ANKER -TEPPICHBODEN**

Gebr. Schoeller GmbH + Co. KG  
Postfach 10 19 26 | D - 52319 Düren  
Telefon 0 24 21/804-0  
Telefax 0 24 21/804-200  
anker@anker-dueren.de  
www.anker.eu

**Export**

Phone +49 (0) 24 21/804-216  
Fax +49 (0) 24 21/804-309  
export@anker-dueren.de  
www.anker-carpets.com