



Perfect for corridors...

BERWICK

Construction	Tufted
Pile content	80% Wool 20% Nylon – BS 3655
Pitch	31.5 per 10cm (8 per inch)
Pile weight	1288gm m ² / 38oz sq yd – ISO 8543 (BS 4223)
Backing – secondary	Lobac
Width	4.00m (13ft 1 1/2") Broadloom – BS 3655
Total carpet thickness	10.00mm +/- 1.00mm (0.35 inches) ISO 1765 (BS 4223)
Total carpet weight	2468gm m ² +/- 5% (72.8oz sq yd) ISO 8543 (BS 4223)
Suitability for use	Heavy Contract

The above specifications are subject to normal commercial tolerance. A fully detailed specification for this product can be made available by application to The Wilton Carpet Factory Limited.

CE CE EN 14041 2004 Classification Cfl s1 (C Flooring)

Colour fastness Wet 3-4 (Scale 1-5)

Installation and maintenance Please refer to the factory for full installation and maintenance advice.



WILTON CARPETS

The Wilton Carpet Factory Limited

Minster Street, Wilton, Salisbury
Wiltshire SP2 0AY

t 01722 746000 f 01722 742923

e sales@wiltoncarpets.com

www.wiltoncarpets.com

ISO 9001 Quality Assurance Certified

© Copyright The Wilton Carpet Factory Limited All copyright, design rights and intellectual property rights existing in our designs are and will remain the property of The Wilton Carpet Factory Limited. Any infringement of these rights will result in appropriate legal action. Colours are reproduced within the limits of the printing process.



Designed
and made
in Britain



WILTON CARPETS



Inspired design. Made to last.

BERWICK

BERWICK

Wilton Carpets is delighted to launch Berwick, the new Herringbone and Stripe, coordinating range. Both designs are offered in seven soft and accommodating colourways with neutral overtones giving a stunning, smart, boutique look. The two designs can be mixed and matched perfectly thereby creating the interior effect you're looking for.

Available immediately from stock, Berwick is a four-metre wide, wool-rich tufted carpet and is long-lasting due to its tough 80% wool and 20% nylon construction. This makes it perfect for guestrooms, corridors and meeting rooms.

Berwick effortlessly transforms spaces, is stylistically on point and blends value and quality perfectly.



kelso 250/50220



selkirk 260/50220



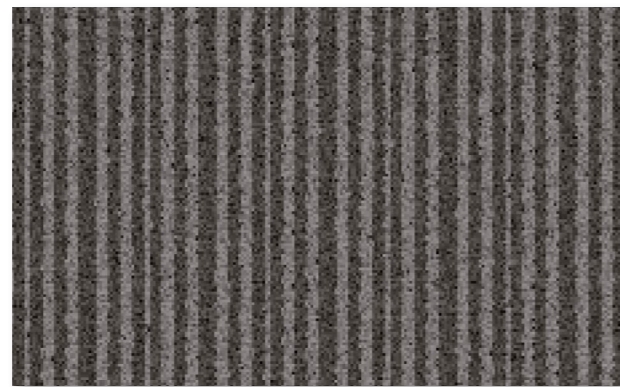
wark 252/50220



heiton 262/50220



carham 253/50220



hornccliffe 263/50220



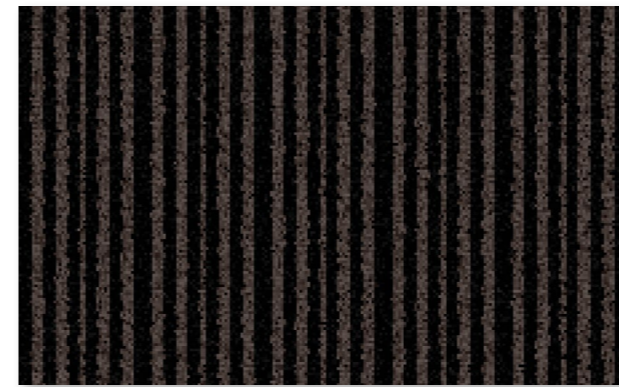
norham 254/50220



allanton 264/50220



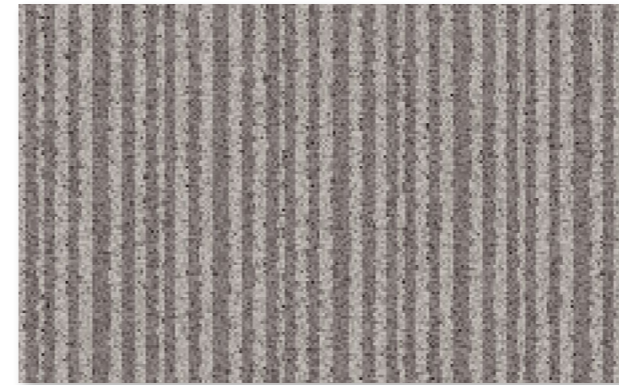
maxton 257/50220



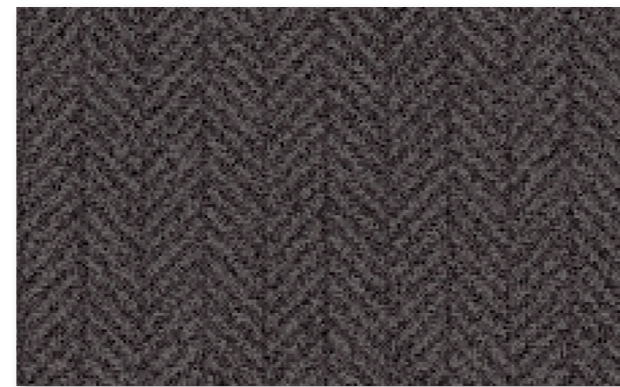
lennel 267/50220



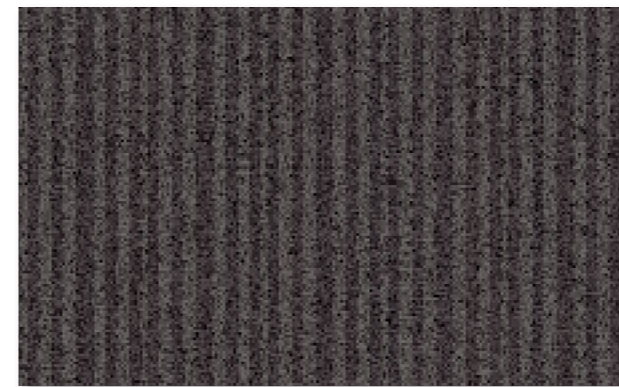
swinton 258/50220



earlston 268/50220



birgham 259/50220



boswell 269/50220



...and ideal for guestrooms